

Social Studies Grade 8 E

Grade Level Standard(s):

8.G.MM.1

Materials:

- Social Studies 8 E Attainment Task Questions for Student Use

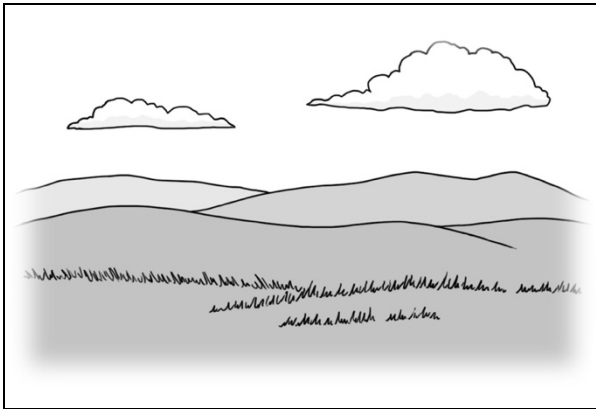
Response Code:

- Indicate the answer provided by the student.

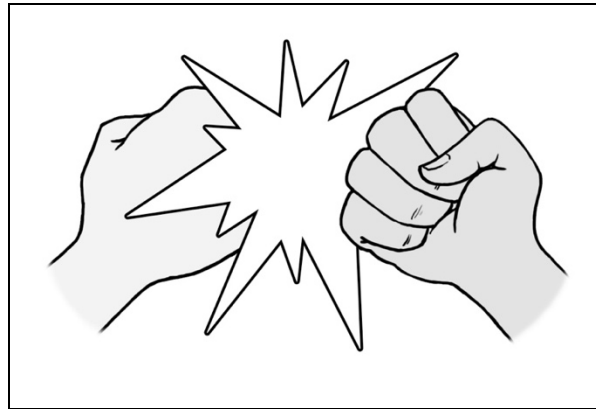
Text Coding:

- “Quotation marks” indicate the script that the teacher should read to the student.
- *Italicized text* provides further direction for the test administrator.
- Words in parenthesis () are optional; they may replace or be read in addition to the word(s) immediately preceding.

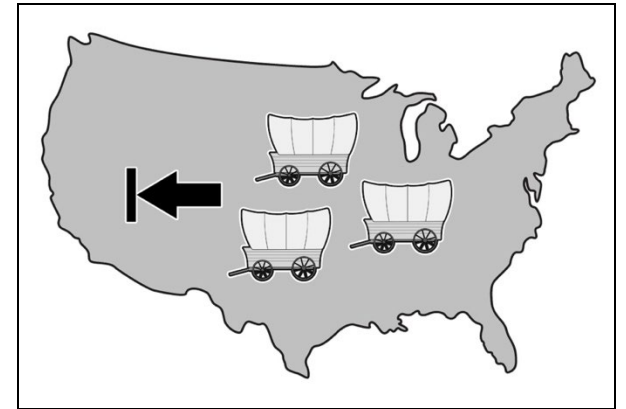
a. American Indians were willing to share their lands with the settlers.



b. American Indians were too competitive in the settlers' businesses.



c. American Indians were a barrier to the settlers' westward expansion.



Before beginning task administration, please ensure that all conditions specified in the administration protocol (starting on page 10 of the Administration Guide Overview and Attainment Task Administration) have been met. Inform the student that the task is about to start by saying, “We are about to start the task, and I am going to ask you some questions.”

All questions from this task are available for presentation to the student in the supplemental material Social Studies 8 E Attainment Task Questions for Student Use.

“Jamal is tracing his family genealogy (family line). He discovers he is a descendant from a family of enslaved people from Africa who lived in the southern states. Enslaved people were forcibly brought to America for their labor.”

“Jamal reads more about forced migration and learns about the Indian Removal Act of 1830 and the Trail of Tears. American Indians were forced to leave their homelands and move west of the Mississippi. European settlers petitioned the federal government to have the American Indians removed from their homelands east of the Mississippi.”

2. “Why did European settlers want American Indians removed?”

Response Option	Response Rationale
a. American Indians were willing to share their lands with the settlers.	<i>The student attempts to interpret how political, environmental, social, and economic factors led to the forced migration of American Indians but incorrectly concludes that American Indians were willing to share their land.</i>
b. American Indians were too competitive in the settlers’ businesses.	<i>The student attempts to interpret how political, environmental, social, and economic factors led to the forced migration of American Indians but incorrectly concludes that American Indians were too competitive in the settlers’ businesses.</i>
c. American Indians were a barrier to the settlers’ westward expansion. (Correct)	<i>The student correctly concludes that political, environmental, social, and economic factors led to the forced migration of American Indians because they presented a barrier to the westward expansion of the European settlers.</i>
Depth of Knowledge (DOK) 3	

Social Studies 8 E Attainment Task Questions for Student Use

2. Why did European settlers want American Indians removed?

Kentucky Academic Standard: 8.G.MM.1 Interpret how political, environmental, social and economic factors led to both forced and voluntary migration in the United States from the Colonial Era to Reconstruction from 1600-1877.

Alternate Assessment Target: *No limitations. All parts of the Kentucky Academic Standard are eligible to be included as an assessment item.*

Student Group	Number of Students*	Percent Correct
<i>All students</i>	568	46.48%
<i>Gender</i>		
Female	201	41.79%
Male	367	49.05%
<i>Ethnicity</i>		
African American	76	47.37%
American Indian or Alaska Native	<10	Not Reported
Asian	<10	Not Reported
Hispanic or Latino	<10	Not Reported
Native Hawaiian or Pacific Islander	<10	Not Reported
White (non-Hispanic)	420	46.43%
Two or More Races	62	45.16%
<i>English Learner</i>	27	51.85%
<i>Economically Disadvantaged</i>	450	45.78%

*Number of Students that attempted the item