

**Reading Grade 8 A**

**Grade Level Standard(s):**

RI.8.1

**Materials:**

- Reading 8 A Letter to the School
- Reading 8 A Letter to the School Picture Board
- Reading 8 Attainment Task Questions for Student Use

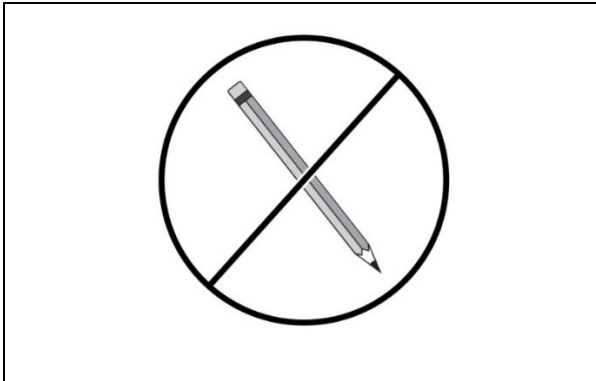
**Response Code:**

- Indicate the answer provided by the student.

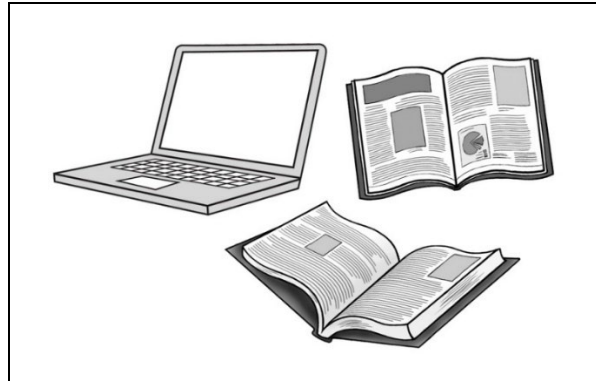
**Text Coding:**

- “Quotation marks” indicate the script that the teacher should read to the student.
- *Italicized text* provides further direction for the test administrator.
- Words in parenthesis ( ) are optional; they may replace or be read in addition to the word(s) immediately preceding.

a. The students can stop using pencils.



b. The students can use them to do research.



c. The students can use them during free time.



*Before beginning task administration, please ensure that all conditions specified in the administration protocol (starting on page 10 of the Administration Guide Overview and Attainment Task Administration) have been met. Inform the student that the task is about to start by saying, “We are about to start the task, and I am going to ask you some questions.”*

*All questions from this task are available for presentation to the student in the supplemental material Reading 8 A Attainment Task Questions for Student Use.*

*Explain to the student that they will be reading a passage and will then answer a few questions about the passage. Present the student with Reading 8 A Letter to the School (Reading 8 A Letter to the School Picture Board may be presented as a support for the student). Have the student read, or read to the student, the passage Reading 8 A Letter to the School.*

“The students feel they have the right to use their devices during class.”

2. “What is one reason the students give to try and persuade the principal to allow devices?”

<b>Response Option</b>	<b>Response Rationale</b>
a. The students can stop using pencils.	<i>The student attempts to identify a detail in the text supporting the students’ request to use devices but makes an incorrect inference.</i>
b. The students can use them to do research. <b>(Correct)</b>	<i>The student correctly cites evidence from the text that supports the students’ request to use devices in class.</i>
c. The students can use them during free time.	<i>The student cites a fact that is not mentioned in the text and does not support the students’ request to use devices in class.</i>
<b><i>Depth of Knowledge (DOK) 1</i></b>	

**Reading 8 A Letter to the School**

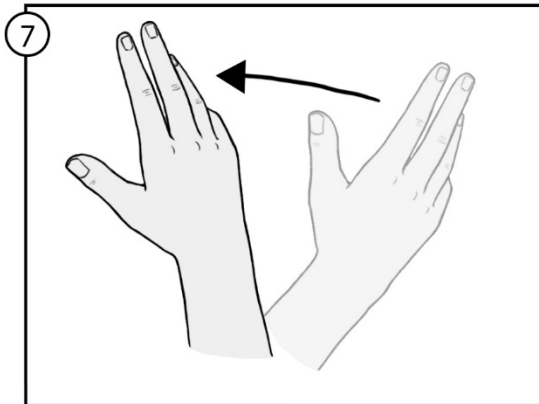
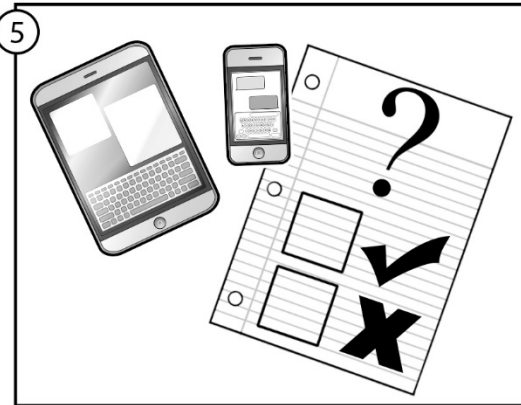
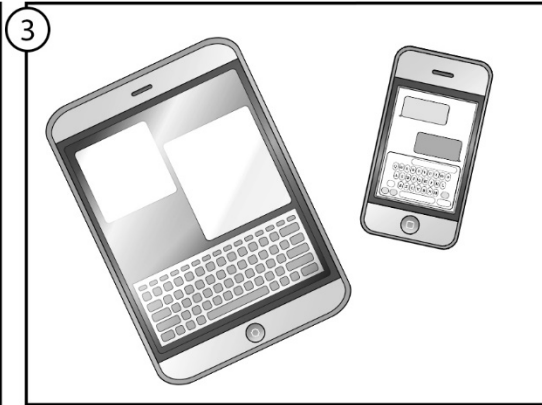
Dear Principal Jefferson,

<sup>1</sup>We the students of Cold Springs Middle School, in order to form a more perfect school and to ensure teacher and student tranquility, will be meeting in the auditorium. <sup>2</sup>We will have a peaceful rally on Thursday afternoon. We want to express our desire for freedom to use electronic devices like tablets and cellphones in the classroom. <sup>3</sup>We feel we have the right to have our devices during class time for the benefits they can offer. Technology is as necessary to our learning as having a pencil. <sup>4</sup>Devices will allow us to have research in the palm of our hand. Just think of the educational doors this will open! <sup>5</sup>Electronic devices will also allow us to participate in classroom activities like discussion posts, surveys, and answering questions. <sup>6</sup>Lastly, technology allows us to ask our teachers questions, without feeling pressured or embarrassed. <sup>7</sup>We invite you to join us during this event to hear from the student body.

Sincerely,

The Students of Cold Springs Middle School

Reading 8 A Letter to the School Picture Board



**Reading 8 A Attainment Task Questions for Student Use**

2. What is one reason the students give to try and persuade the principal to allow devices?

**Kentucky Academic Standard:** KY.8.RI.1 Cite relevant textual evidence to support analysis of what the text says explicitly as well as inferences drawn from the text.

**Alternate Assessment Target:** *No limitations, all parts of the Kentucky Academic Standard are eligible to be included as an assessment item.*

Student Group	Number of Students	Percent Correct
All Students	555	55.68%
<b>Gender</b>		
Female	176	51.70%
Male	379	57.52%
<b>Ethnicity</b>		
African American	74	51.35%
American Indian or Alaska Native	<10	Not Reported
Asian	<10	Not Reported
Hispanic of Latino	<10	Not Reported
Native Hawaiian of Pacific Islander	<10	Not Reported
White (Non-Hispanic)	403	56.08%
Two or More Races	68	55.88%
<b>English Learner</b>	26	46.15%
<b>Economically Disadvantaged</b>	425	54.59%

\*Number of Students that attempted the item