



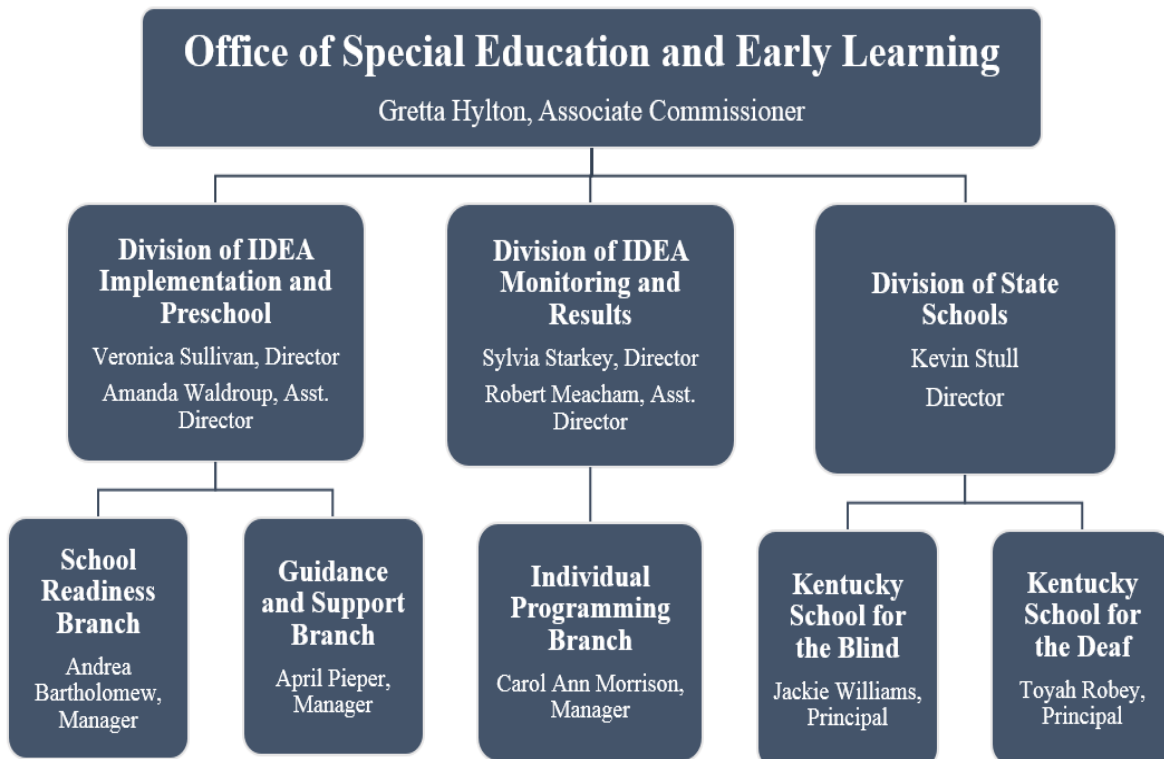
Critical Fact Sheet

A Publication of the Office of Special Education and Early Learning

Office of Special Education and Early Learning

Overview/Background

In November, 2018 the Kentucky Department of Education went through a reorganization that resulted in the Division of Learning Services being elevated to the Office of Special Education and Early Learning (OSEEL). The structure OSEEL includes office-level staff dedicated to policy, data, finance, and communication. The three divisions are broken into: the Division of IDEA Implementation and Preschool, Division of IDEA Monitoring and Results, and Division of State Schools. The graphic below provides a visual outlines the structure of OSEEL:





Mission:

The mission of OSEEL is to improve educational outcomes from diverse students and early learners through effective support, technical assistance, training, coaching and guidance.

Office level staff include:

Gretta Hylton, Associate Commissioner
Pam Ayer, Executive Secretary
Tracy Goff-Herman, Policy Analyst
Karla Miller, Education Financial Analyst
Amy Patterson, IDEA Part-B Data Manager
Joe McCowan, Communications / Advisory Liaison

Contract Positions that Support OSEEL's Mission:

Emma Riley, Kentucky Deaf-Blind Project Transition Coordinator
Jonathan Compton, IDEA Fiscal Liaison
Chris Thacker, IDEA Data and Fiscal Support
Roger Lacy, IDEA General Supervision Support
Gary Martin, Grants Management and System Support
Mike Waford, Behavior Specialist with Coaching and Support

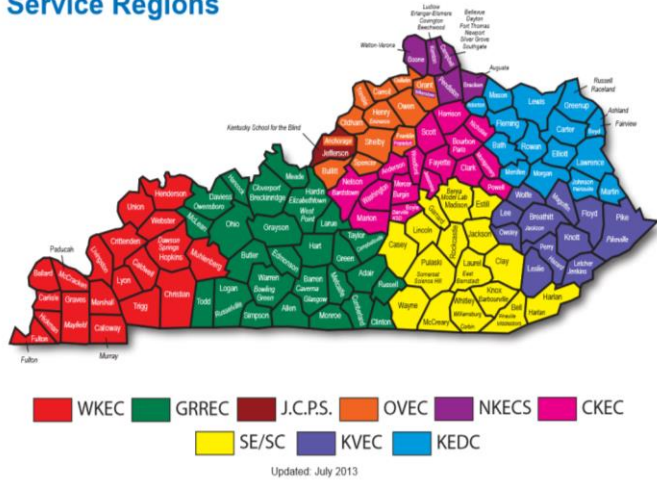
IDEA Funding SY 2018-19:

Local Education Agency "Flow-Through" Funds:	\$145,988,741
State Administration Funds:	\$3,498,062
State-Set Aside / Discretionary Funds:	\$16,245,336

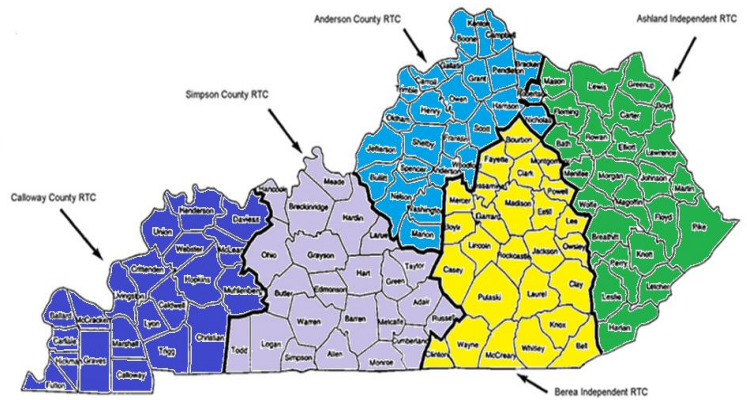


OSEEL Funded Partners That Assist with Fulfilling the Mission of OSEEL:

Special Education Service Regions



Kentucky Early Childhood Regional Training Centers



OSEEL Funded Partners:

- University of Kentucky
 - Teachers of Visually Impaired
 - Center on Trauma and Children
 - Deaf/Blind Support Contracts
 - Post-Secondary Support
 - Special Education Consortium
 - Human Development Institute Technical Assistance
 - State Personnel Development Grant (SPDG)
 - Community Based Work Transition Program
- University of Louisville
 - Kentucky Autism Training Center (KATC)
 - Academic and Behavior Response to Intervention (ABRI)
 - State Personnel Development Grant (SPDG)
- Eastern Kentucky University
 - Interpreter Training
 - Center for Instructional Discipline (KYCID)
- Northern Kentucky University
 - Traineeship
- Murray State University
 - Alternative Certification Program



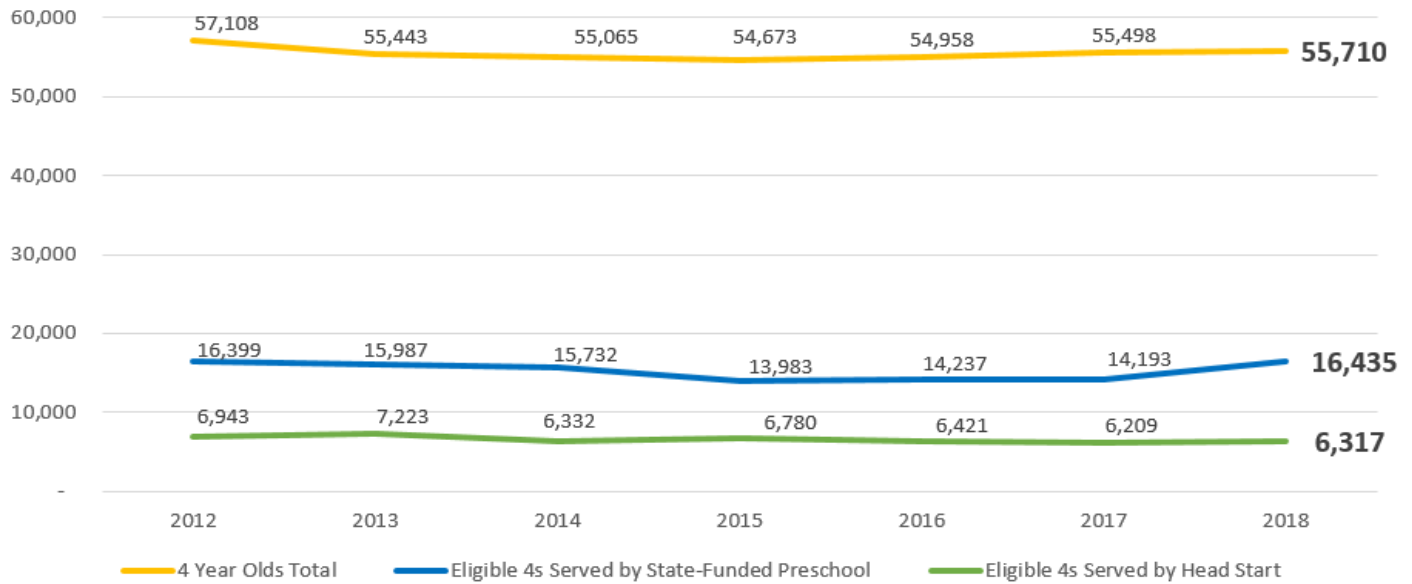
- Heuser Hearing
- Visually Impaired Preschool Services
- Lexington Hearing and Speech
- Very Special Arts
- Kentucky Special Involvement Network (KYSPIN)
- TAESE
 - Complaint Investigator
 - SACEC
 - Legal Issues
 - Dispute Resolution
- JAVITS
- Gifted and Talented
- IDEA Legal Mediators

OSEEL Serves:

Disability Category	Dec 2011	Dec 2012	Dec 2013	Dec 2014	Dec 2015	Dec 2016	Dec 2017	Dec 2018
Autism	4,378	4,839	5,381	5,793	6,345	6,943	7,427	8,040
Deaf-Blindness	17	16	13	13	13	13	12	12
Developmental Delay	13,054	12,984	12,993	13,315	13,644	13,883	14,360	14,654
Emotional Behavioral Disability	4,934	4,742	4,653	4,452	4,430	4,502	4,475	4,551
Functional Mental Disability	3,104	3,076	3,099	3,064	3,121	3,107	3,099	3,053
Hearing Impairment	752	710	716	707	702	705	701	695
Multiple Disabilities	2,537	2,301	2,172	2,114	2,050	2,011	2,010	2,008
Mild Mental Disabilities	11,669	10,968	10,522	10,264	10,170	10,315	10,483	10,567
Other Health Impairment	14,049	13,581	13,576	13,532	13,956	14,448	14,995	15,456
Orthopedic Impairment	528	523	505	476	471	485	459	438
Speech Language Impairment	29,032	28,870	28,625	28,249	27,916	27,940	28,331	28,324
Specific Learning Disability	13,954	14,155	14,451	15,079	15,699	16,419	17,110	17,643
Traumatic Brain Injury	215	225	230	228	234	229	226	219
Visual Impairment	561	564	531	534	534	579	582	593
Statewide Count (Ages 3-21)	98,784	97,554	97,467	97,820	99,285	101,579	104,270	106,253



Estimated Number of 4s and Number of 4s Served by Public Preschool



Contact Information

Gretta Hylton,
Associate Commissioner
Office of Special Education and Early Learners
Kentucky Department of Education
Gretta.Hylton@education.ky.gov
(502) 564-4970 ext. 4109