

The background is a composite image. The top left shows a line of yellow school buses, with the word 'SCHOOL BUS' and the number '32' visible on the front of one. The bottom left shows a classroom with blue walls, decorated with colorful balloons and framed pictures. There are several desks and chairs arranged in the room.

Family Guide to Special Education

Episode 2: The Individual Education Program (IEP)



Kentucky Department of
E D U C A T I O N

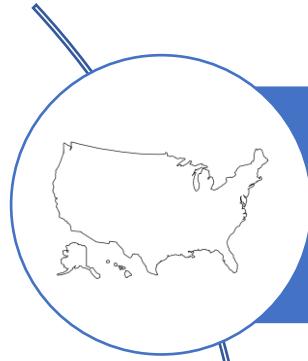
The IEP



Episode Topics:

- The Individual Education Program (IEP)
- IEP Development
- IEP Contents

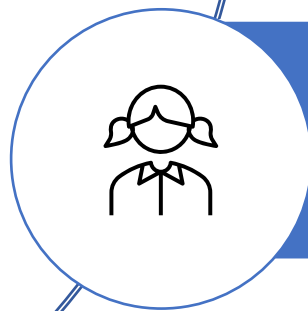
Special Education Laws



Federal Law: Individuals with Disabilities Education Act (IDEA)



Kentucky Law: Kentucky Administrative Regulations (KAR) for Special Education Programs



The IDEA and KARs apply to children from ages three to 21, or preschool to high school.

What is an Individual Education Program (IEP)?

- A written, individualized plan
- Developed by the Admissions and Release Committee (ARC), including parents
- Helps ensure children can learn with everyone else

Who are the members of the ARC?



Parent



Regular Education Teacher



Representative of Agency



Special Education Teacher



Evaluation Interpreter



Child

What is the parents' role in IEP development?

Share what is known about the child.

Discuss goals that are most important to the parent and to the child.

Express concerns and give insights about the child.

Speak up on the child's behalf.

Ensure the child's input is considered.

When is an IEP developed?

Initial
Evaluation

Annual
Review

Reevaluation

What are key components of an IEP?

Present Levels

Annual Goals and
Benchmarks

Reporting Progress

Assessment
Accommodations

Least Restrictive
Environment

Special Education
Services

Related Services

What are the Present Levels of Academic Achievement and Functional Performance (PLAAFP)?

Summary

Baseline

Foundation

Description

Present Levels/PLAAFP Includes:

Communication

Academic Performance

Health, Vision, Hearing
and Motor Abilities

Social and Emotional
Skills

Present Levels/PLAAFP Includes:

General Intelligence

Transition Needs

Functional
Vision/Learning Media
Assessment

Functional Hearing,
Listening and
Communication
Assessment

What will my child be working on?



How will I know if my child is making progress?

Ongoing with Special
Education Teacher

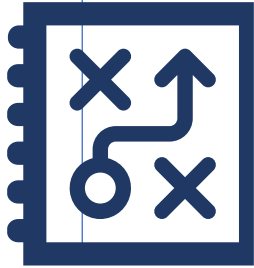
Stated in IEP

Reviewed Yearly at
ARC

Shared with Family

IEP must include a statement of when this information will be shared.

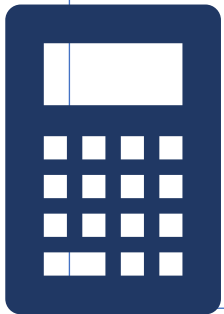
What are accommodations and modifications?



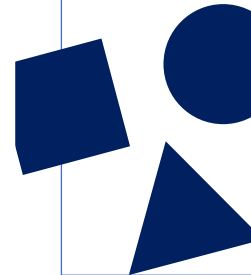
Accommodations: Change in **how** a child gets information and shows what they know



Modifications: Changes in **what** the child is taught or expected to learn



Based on your child's needs



Some may not always be allowed on the state assessment

What are Some Examples of Accommodations?

- An adult writes or types the child's responses
- A reader is provided (human or electronic)
- More time is given
- Use of assistive technology
- Hands-on materials
- Calculator
- Behavior strategies

What are Some Examples of Modifications?

Fewer or
Different
Problems

Shorter
Papers

Fewer or
Different Test
Questions

Special
Schedule or
Organizers

Real-World
Tasks as
School Work

What is the Least Restrictive Environment (LRE)?

Required by law

Helps children participate with non-disabled peers across school settings

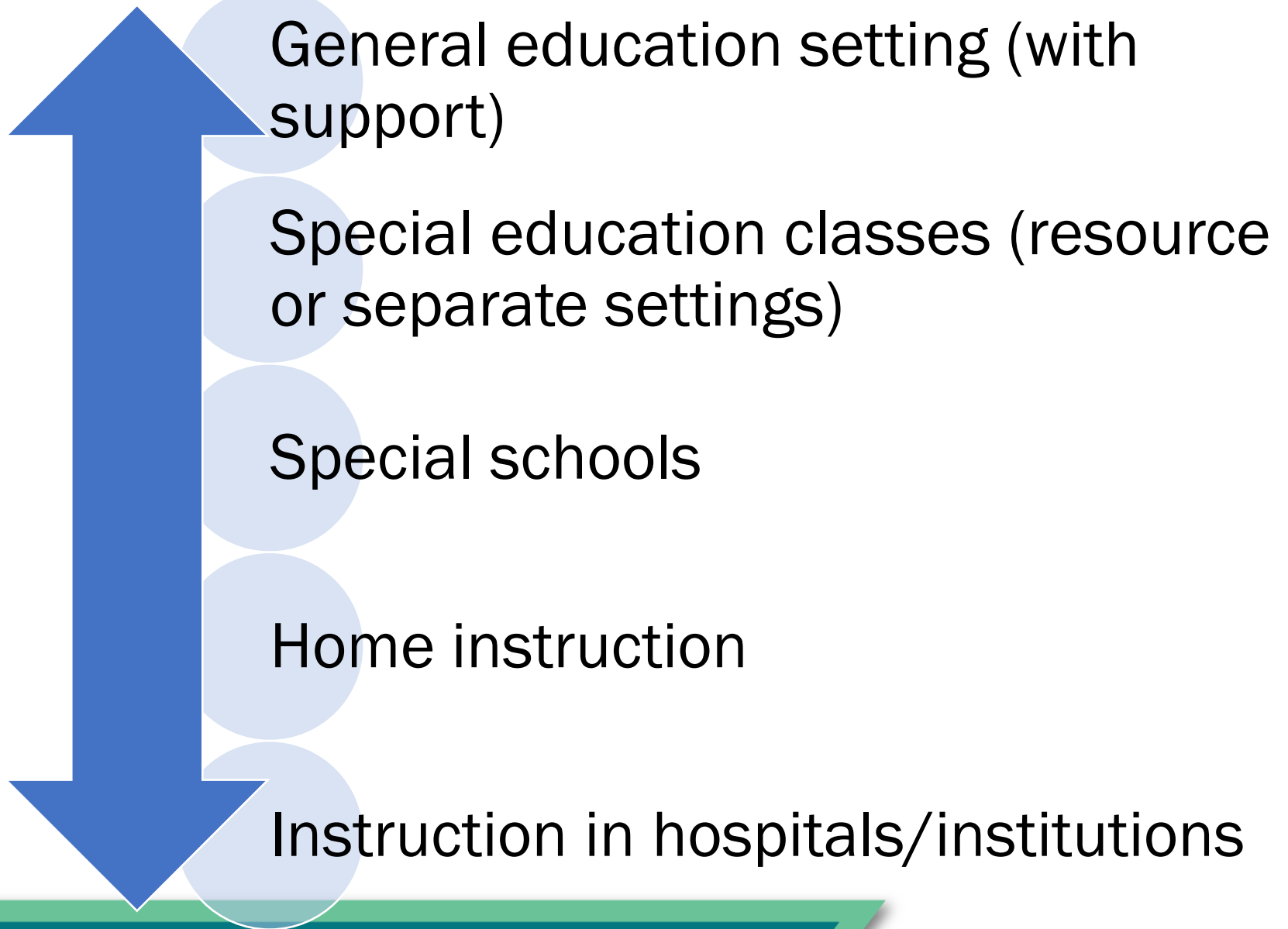
Set at least once a year

As close as possible to the child's home

Includes school-based, non-academic and extracurricular services and activities (clubs, field trips and sports)

Based on the child's needs, expected outcomes and the IEP

LRE Continuum



What are Special Education Services?

Special Education Services							
Type of Service	Anticipated Frequency and Duration				Service Provider (by position)	Location (general education classroom, resource room, separate class)	
	Service Minutes (per service frequency)	Service Frequency (number of times provided per service period)	Service Period (daily, weekly, monthly)	Start Date			End Date

What are Related Services?

- Provides disability-specific help and support in needed areas.
- Examples:
 - Speech-language services
 - Sign language services
 - Physical or occupational therapy
 - Transportation

Who can I contact if I have questions about the IEP process?

- Your child's teacher or case manager
- Director of Special Education (DoSE) for child's school district
 - [Open House: District and School Directory](#)
- Preschool Coordinator for your child's school district



IEP Resources

- [Guidance for Individual Education Program \(IEP\) Development](#)
- [Sample IEP](#)
- [Guidance for ARC on Participation Decisions for the Kentucky Alternate Assessment](#)
- [KDE Transition Resource webpage](#)
- [KDE OSEEL Parent and Family Rights webpage](#)
- [Parent and Family Toolbox](#)

Thank you!

Office of Special Education and Early Learning
502-564-4970