

# Kentucky's Fast Facts

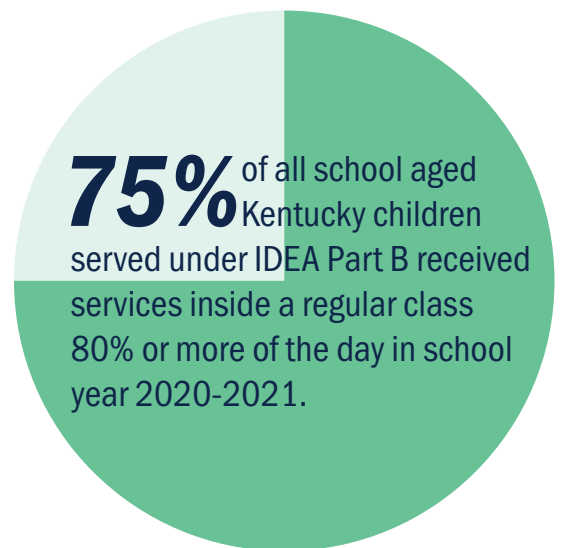
## Educational Environments of Kentucky Children with Disabilities, Ages 5 (in kindergarten) - 21, Served under IDEA Part B

From the Kentucky Department of Education (KDE), Office of Special Education and Early Learning (OSEEL) January, 2023

Related Resource from the Office of Special Education Programs (OSEP): [OSEP Fast Facts: Educational Environments of School Aged Children with Disabilities](#)

For the purposes of this fact sheet, educational environments are defined in the [IDEA Part B Child Count and Educational Environments for School Year 2020-2021, OSEP Data Documentation](#).

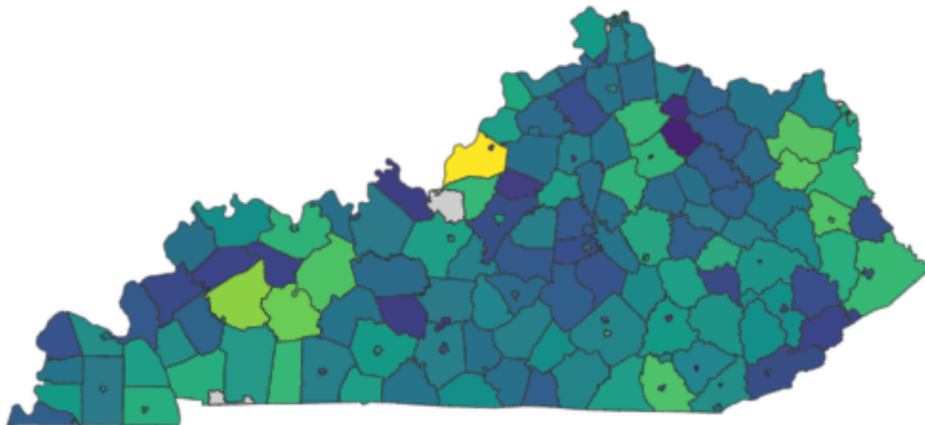
This graphic below represents the percentage of Kentucky Students with Disabilities, Ages 5 (in kindergarten) - 21, Receiving Services Inside a Regular Class 80% or More of the Day, School Year 2020-2021



Kentucky School District Map

Percent

52.4%  100.0%



Northern Kentucky Districts



Kentucky Schools for the Blind (KSB) and the Deaf (KSD)

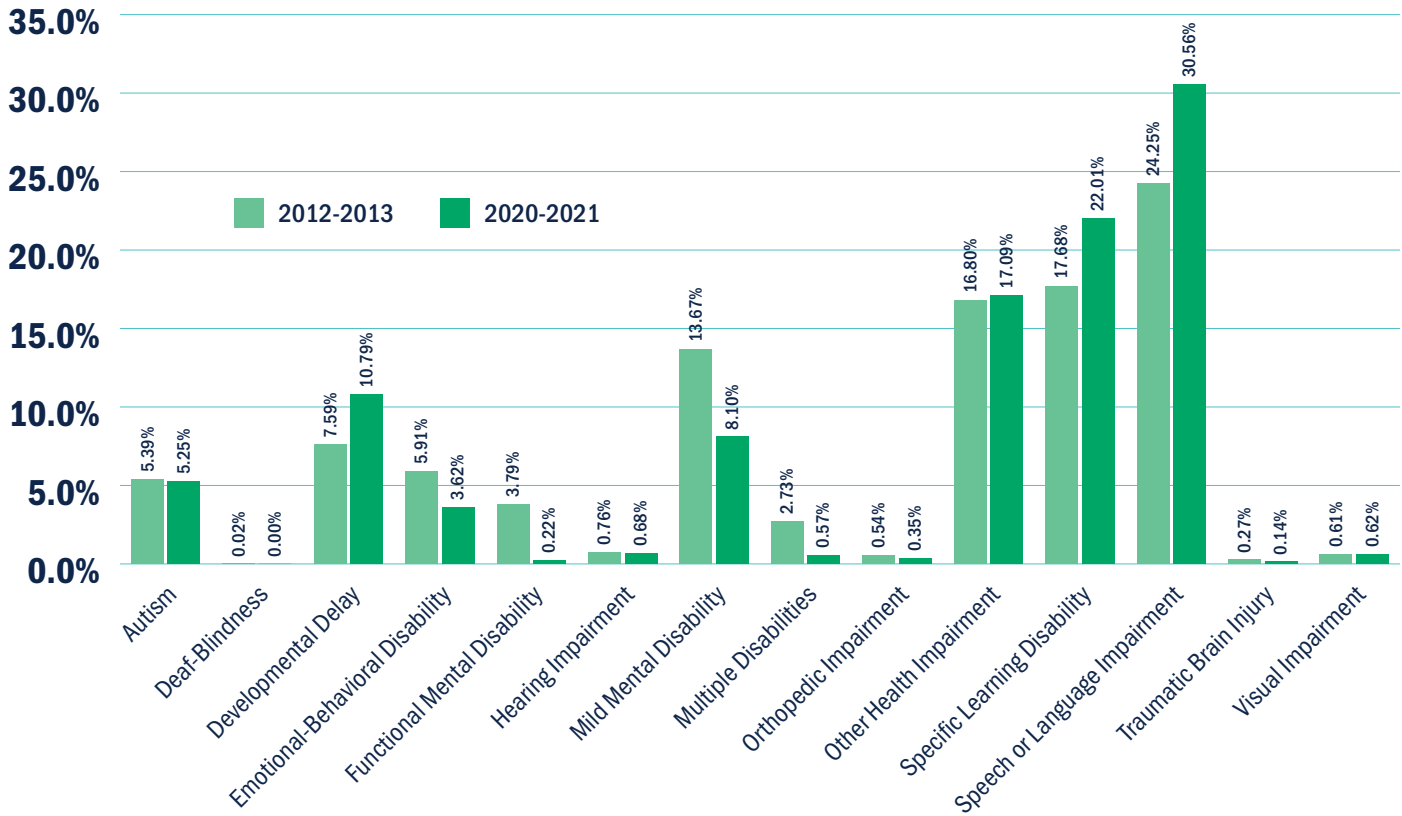


District Map by Indicator 5A: Inside the regular class 80% or more of the day. Grey spaces indicate "Data Not Available" when data were not provided or were redacted in accordance with KYSTATS' policy.

Source: District Map and Data retrieved from the [Kentucky Special Education Indicator Dashboard](#).

## Percentage of Kentucky Students with Disabilities, Ages 5 (in kindergarten) - 21, Receiving Services Inside a Regular Class 80% or More of the Day, by Disability Category

**School Years 2012-2013 and 2020-2021**



## Percentage of Kentucky Students with Disabilities, Ages 5 (in kindergarten) - 21, by Educational Environment and Race/Ethnicity

**School Year 2020-2021**

	>80% of the school day in regular classes	40-80% of the school day in regular classes	<40% of the school day in regular classes	Residential Facility	Homebound/ Home Hospital	Correctional Facility	Parentally Placed in Private Schools	Separate School
White	77.18%	12.87%	7.40%	0.32%	0.79%	0.02%	1.07%	0.34%
Two or more races	76.32%	13.34%	8.52%	0.14%	0.55%	0%	0.53%	0.60%
Native Hawaiian or other Pacific Islander	70.31%	17.19%	10.94%	0%	0%	0%	0%	1.56%
Hispanic/Latino	73.89%	15.87%	8.61%	0.18%	0.55%	0.02%	0.57%	0.30%
Black or African American	60.45%	21.82%	14.73%	0.32%	0.58%	0.22%	0.27%	1.59%
Asian	65.51%	14.65%	14.42%	0.46%	0.69%	0%	2.42%	1.85%
American Indian or Alaska Native	72.26%	21.90%	2.92%	0%	0%	0%	2.19%	0.73%

## Percentage of Kentucky Students with Disabilities, Ages 5 (in kindergarten) - 21, by Educational Environment and Disability Category

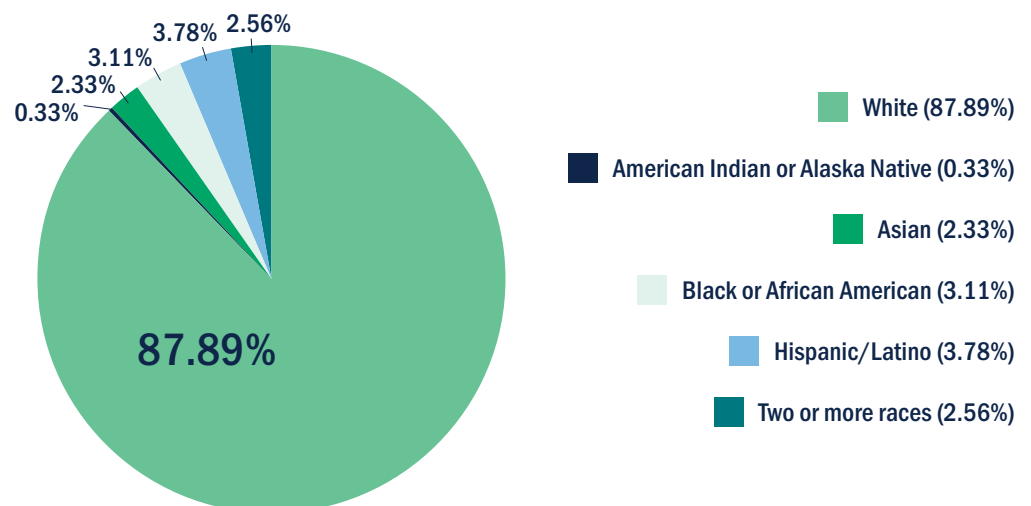
**School Year 2020-2021**

	>80% of the school day in regular classes	40-80% of the school day in regular classes	<40% of the school day in regular classes	Residential Facility	Homebound/ Home Hospital	Correctional Facility	Parentally Placed in Private Schools	Separate School
Autism	45.55%	22.56%	28.81%	0.23%	1.28%	0%	0.74%	0.82%
Developmental Delay	83.06%	11.57%	4.52%	0.08%	0.20%	0%	0.51%	0.06%
Emotional-Behavioral Disability	57.80%	20.26%	13.64%	1.81%	2.92%	0.56%	0.07%	2.94%
Functional Mental Disability	5.44%	25.21%	64.97%	0.79%	1.98%	0%	0.17%	1.44%
Mild Mental Disability	54.75%	34.30%	9.33%	0.39%	0.66%	0.01%	0.26%	0.29%
Multiple Disabilities	22.43%	19.49%	45.40%	1.22%	6.81%	0%	0.44%	4.21%
Other Health Impairment	76.97%	17.20%	3.99%	0.37%	0.93%	0.06%	0.20%	0.28%
Specific Learning Disability	87.86%	10.87%	0.77%	0.05%	0.19%	0.04%	0.16%	0.06%
Speech or Language Impairment	96.84%	0.10%	0.04%	0.01%	0.02%	0%	2.97%	0.02%
Other Disabilities Combined	75.74%	10.45%	6.67%	1.42%	0.89%	0%	0.89%	3.96%

“Other disabilities combined” includes the disability categories deaf-blindness, hearing impairment, orthopedic impairment, traumatic brain injury and visual impairment. Combined, these categories represent 3.96% of Kentucky students with disabilities, ages 5 (in kindergarten) - 21.

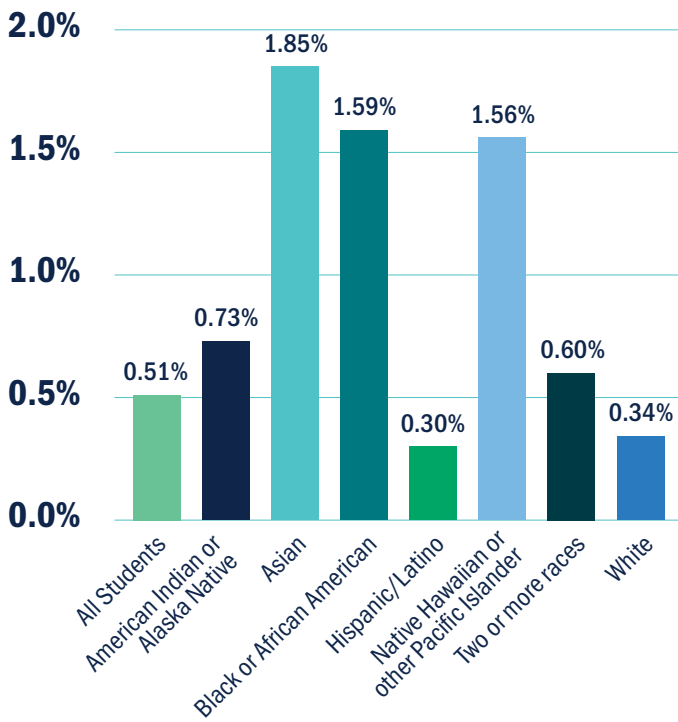
### Percentage of Kentucky Students with Disabilities, Ages 5 (in kindergarten) - 21, Served in Parentally Placed Private Schools, By Race/Ethnicity

**School Year 2020-2021**



**Percentage of Kentucky Students with Disabilities, Ages 5 (in kindergarten) - 21, Served in Separate Schools, by Race/Ethnicity**

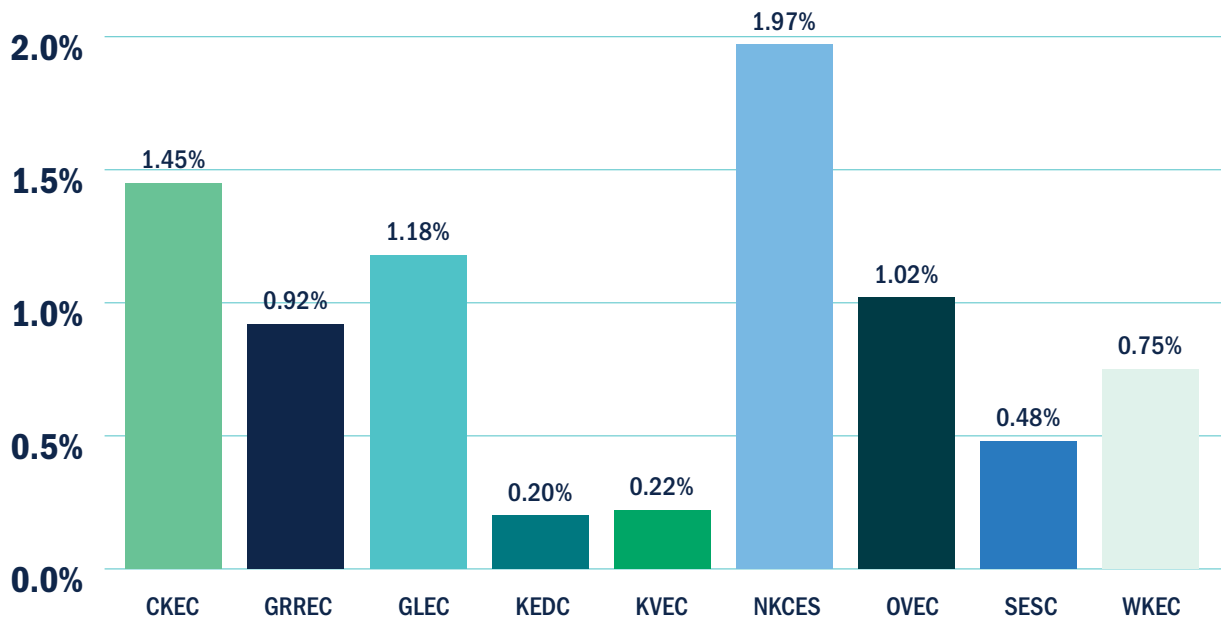
**School Year 2020-2021**



Asian (1.85%), Black or African American (1.59%) and Native Hawaiian or other Pacific Islander students are more than three times as likely to receive services in separate schools than All Students with disabilities (0.51%).

**Percentage of Kentucky Students with Disabilities, Ages 5 (in kindergarten) - 21, Within a Special Education Regional Technical Assistance Center (SERTAC) Area, Served in Parentally Placed Private Schools**

**School Year 2020-2021**



# WHERE CAN I ACCESS MORE DATA ON STUDENTS SERVED UNDER IDEA PART B?

## RESOURCES

- [The KY Special Education Data Dashboard](#) (KDE): an interactive dashboard which can be used to determine the number of students with disabilities in Kentucky, as well as individual districts, Special Education Technical Assistance Centers (SERTAC) and Early Childhood Regional Training Centers (RTC) for the last three years.
- [The KY Special Education Indicator Dashboard](#) (KDE): reports data from Kentucky's Annual Performance Report (APR) in four interactive dashboards including, School Districts, SERTACs, RTCs and District Profiles.
- [Least Restrictive Environment \(LRE\) Information Brief](#) (IRIS Center): discusses the continuum of placements for LRE and provides examples of possible placements along the continuum.