

**Reading Grade 8 A**

**Grade Level Standard(s):**

RL.8.4

**Materials:**

- Reading 8 A Letter to the School
- Reading 8 A Letter to the School Picture Board
- Reading 8 Attainment Task Questions for Student Use

**Response Code:**

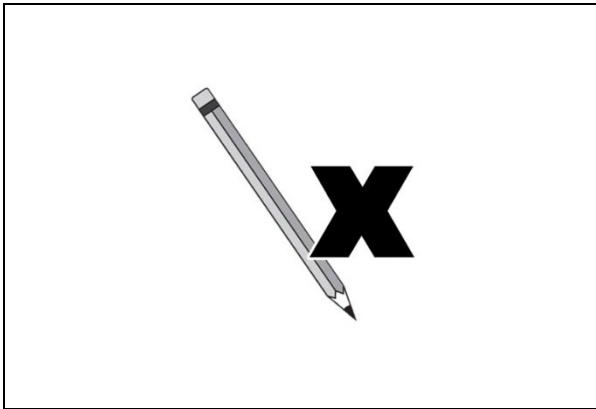
- Indicate the answer provided by the student.

**Text Coding:**

- “Quotation marks” indicate the script that the teacher should read to the student.
- *Italicized text* provides further direction for the test administrator.
- Words in parenthesis ( ) are optional; they may replace or be read in addition to the word(s) immediately preceding.

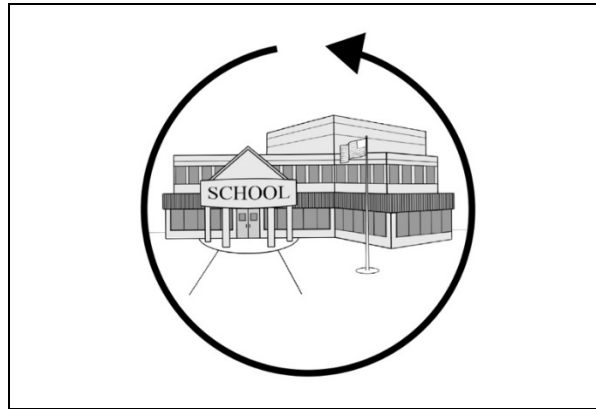
a.

It means pencils are useless.



b.

It means the school should supply everything the students need.



c.

It means technology is important in school.



*Before beginning task administration, please ensure that all conditions specified in the administration protocol (starting on page 10 of the Administration Guide Overview and Attainment Task Administration) have been met. Inform the student that the task is about to start by saying, “We are about to start the task, and I am going to ask you some questions.”*

*All questions from this task are available for presentation to the student in the supplemental material Reading 8 A Attainment Task Questions for Student Use.*

*Explain to the student that they will be reading a passage and will then answer a few questions about the passage. Present the student with Reading 8 A Letter to the School (Reading 8 A Letter to the School Picture Board may be presented as a support for the student). Have the student read, or read to the student, the passage Reading 8 A Letter to the School.*

4. “What is the meaning of ‘Technology is as necessary to our learning as having a pencil.’?”

<b>Response Option</b>	<b>Response Rationale</b>
a. It means pencils are useless.	<i>The student attempts to interpret the meaning of the phrase but does not identify the correct meaning.</i>
b. It means the school should supply everything the students need.	<i>The student attempts to interpret the meaning of the phrase but does not identify the correct meaning.</i>
c. It means technology is important in school. <b>(Correct)</b>	<i>The student correctly identifies the meaning of the figurative language.</i>
<b><i>Depth of Knowledge (DOK) 2</i></b>	

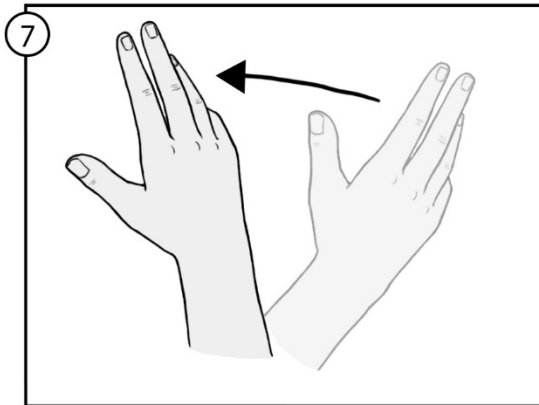
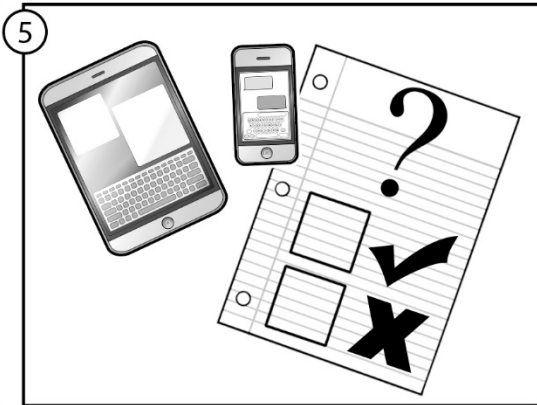
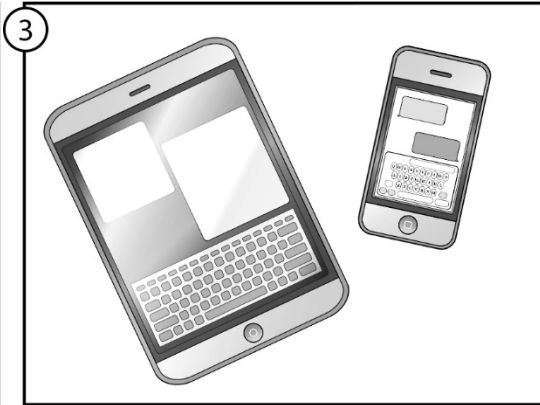
**Reading 8 A Letter to the School**

Dear Principal Jefferson,

<sup>1</sup>We the students of Cold Springs Middle School, in order to form a more perfect school and to ensure teacher and student tranquility, will be meeting in the auditorium. <sup>2</sup>We will have a peaceful rally on Thursday afternoon. We want to express our desire for freedom to use electronic devices like tablets and cellphones in the classroom. <sup>3</sup>We feel we have the right to have our devices during class time for the benefits they can offer. Technology is as necessary to our learning as having a pencil. <sup>4</sup>Devices will allow us to have research in the palm of our hand. Just think of the educational doors this will open! <sup>5</sup>Electronic devices will also allow us to participate in classroom activities like discussion posts, surveys, and answering questions. <sup>6</sup>Lastly, technology allows us to ask our teachers questions, without feeling pressured or embarrassed. <sup>7</sup>We invite you to join us during this event to hear from the student body.

Sincerely,

The Students of Cold Springs Middle School



**Reading 8 A Letter to the School Picture Board**

**Reading 8 A Attainment Task Questions for Student Use**

4. What is the meaning of “Technology is as necessary to our learning as having a pencil.”?

**Kentucky Academic Standard:** KY.8.RL4 Determine the meaning of words and phrases as they are used in a text, including figurative and connotative meanings; analyze the impact of specific word choices on meaning and tone, including but not limited to analogies or allusions to other texts.

**Alternate Assessment Target:** Limit full standard to analogies between two texts.

<b>Student Group</b>	<b>Number of Students*</b>	<b>Percent Correct</b>
<i>All students</i>	570	52.46%
<b>Gender</b>		
Female	201	49.25%
Male	369	54.20%
<b>Ethnicity</b>		
African American	78	47.44%
American Indian or Alaska Native	<10	Not Reported
Asian	<10	Not Reported
Hispanic or Latino	<10	Not Reported
Native Hawaiian or Pacific Islander	<10	Not Reported
White (non-Hispanic)	420	53.57%
Two or More Races	63	50.79%
<b>English Learner</b>	28	46.43%
<b>Economically Disadvantaged</b>	455	52.31%

\*Number of Students that attempted the item