

The background is a composite image. The top left shows a line of yellow school buses, with the word 'SCHOOL BUS' visible on the front of one. The bottom left shows a classroom with blue walls, desks, chairs, and various educational materials. A large white diagonal shape cuts across the image from the top left to the bottom right, serving as a background for the text.

# Superintendents Webcast

Dec. 13, 2022



Kentucky Department of  
**EDUCATION**

# Agenda

## Welcome

*Jason E. Glass, Ed.D., Commissioner of Education and Chief Learner*

## KDE Communications Updates

*Toni Konz Tatman, KDE Chief Communications Officer*

## Kentucky Board of Education Updates

*Lu S. Young, Board Chair*

## Kentucky United We Learn Council Update

*Jason E. Glass, Ed.D., Commissioner of Education and Chief Learner*

## CTE Funding Mid-Year Adjustment Information

*Scott U'Sellis, KDE Data Manager*

## Updates from the Kentucky Department for Public Health

*Connie White, M.D., Deputy Commissioner for Clinical Affairs, Kentucky Department for Public Health*

## Use of ARP ESSER Funds Activity

*Jason E. Glass, Ed.D., Commissioner of Education and Chief Learner*

## Question and Answer Session

*KDE Leadership*

*(Submit Questions via Google Form)*

The background is a composite image. The top left shows a line of yellow school buses with 'SCHOOL BUS' written on the front. The bottom left shows a classroom with blue walls, desks, chairs, and colorful balloons. A white diagonal line separates the two images.

# KDE Communications Updates

Toni Konz Tatman

KDE Chief Communications Officer

Office of the Commissioner



# Nominations Still Open for 2024 Kentucky Teacher of the Year

- Nominations are still being accepted for the 2024 Kentucky Teacher Awards.
- As of Dec. 12, there have been approximately 840 nominations representing 128 counties!
- Any full-time public school teacher in the state with at least three years of experience is eligible.
- [Nominate a teacher via the 2024 Kentucky Teacher of the Year nomination form](#)
- Teachers may be nominated by students, parents, teaching peers, principals, superintendents or anyone from the community who wants to honor an outstanding educator.

2024 **KENTUCKY TEACHER OF THE YEAR**

**NOMINATE  
A TEACHER!**



# Two Receive 2022-2023 Kentucky Education Support Staff Professional Award

- Michael Wright, an instructional assistant at the Calloway County Day Treatment Center, was honored with the 2022-2023 Kentucky Education Support Staff Professional Award on Dec. 12.
- The award was created in 2020 by Gov. Andy Beshear and Lt. Gov. Jacqueline Coleman to recognize the state's more than 46,000 classified school employees.
- Wright received the award in a surprise visit by Coleman, a former educator, and Kentucky Commissioner of Education and Chief Learner Jason E. Glass.
- [Read more about Michael Wright on \*Kentucky Teacher\*.](#)



# Two Receive 2022-2023 Kentucky Education Support Staff Professional Award (Cont.)

- The second honoree is Gallatin County's Heather LeBlanc, who was recognized on Dec. 9.
- As winners of the award, Wright and LeBlanc's names have been forwarded to the U.S. Department of Education (USED) for consideration for the 2022 national Recognizing Inspirational School Employees (RISE) Award.
- The RISE award, which recognizes classified school employees who have displayed excellence in serving students, was passed by Congress in 2019 and is overseen by USED.
- [Read more about Heather LeBlanc on Kentucky Teacher.](#)



# KDE Uses ESSER Funding to Provide Training for New CTSO Advisers

- This fall, more than 215 Kentucky teachers participated in a training for new career and technical student organization (CTSO) advisers.
- The training, funded by \$45,000 from the [Kentucky Department of Education's approved Elementary and Secondary School Emergency Relief \(ESSER\) plan](#), supported new CTSO advisers in schools across the Commonwealth with a focus on effectively managing and seamlessly integrating their respective organizations into their curriculum.
- CTSOs enhance student learning through offering career-focused leadership development and providing students participation and competition opportunities at local, regional, state and national levels.
- [Read more about the CTSO training on Kentucky Teacher.](#)



# Eleven Educators Named to KDE's Principals Advisory Council for Three-Year Term

- Eleven new members have been selected to join the Kentucky Department of Education's (KDE's) Principals Advisory Council (PrAC),
- The council is designed to provide input to Kentucky Education Commissioner and Chief Learner Jason E. Glass and KDE leadership about important topics in Kentucky schools.
- The PrAC has four quarterly meetings each year.





# Eleven Educators Named to KDE's Principals Advisory Council for Three-Year Term (Cont.)

The new PrAC members include:

- Erika Bowles (Boone County)
- Anne Cox (McCracken County)
- Brian Eerenberg (Boyd County)
- Jarrod Hankins (Webster County)
- Robert Lightning (Bowling Green Independent)
- Tanya Jury (Hardin County)
- Kevin Garner (Jefferson County)
- Travis Marcum (Clark County)
- Catrina McDermott (Pineville Independent)
- Jeanna Rose (Anderson County)
- Sarah Woodford (Fayette County)

# Leslie County Teen Becomes Youngest Known Kentuckian Elected to Office

- On Election Day, **Logan Sizemore**, a sophomore at Leslie County High School, became the youngest known Kentuckian ever elected to office.
- He won a spot on the soil and water conservation board in his home county.
- Logan said it was appealing because of his love for agriculture and land management.
- Sizemore was the top vote-getter out of the four candidates who ran.
- [Read more about Logan Sizemore on \*Kentucky Teacher\*.](#)



The background is a composite image. The top left shows a line of yellow school buses with "SCHOOL BUS" written on the front. The bottom left shows a classroom with blue walls, desks, chairs, and colorful balloons. A large white diagonal shape cuts across the image from the top left to the bottom right.

# Kentucky Board of Education Update

Lu S. Young, Ed.D., Board Chair



# Regular Meeting - Action Items

- Approval of amendments to 707 KAR 1:002, Definitions
- Approval of amendments to 704 KAR 3:303, Required Academic Standards
- Approval of 704 KAR 8:120, Kentucky Academic Standards (KAS) for Science
- Approval of amendments to 704 KAR 8:060, Required Academic Standards for Social Studies



# Kentucky United We Learn Council

“We have an opportunity to make this happen in Kentucky and lead the nation again when it comes to assessment and accountability that drives good things for every learner in the Commonwealth.”

- KBE Chair Lu Young



# Regular Meeting - Discussion Items

- 2021-2022 Data At-a-Glance and Statewide Efforts to Support Teaching and Learning
- Update on KDE Diversity, Equity, Inclusion and Belonging Efforts
- Facilities Update



# 2022 Kevin M. Noland and Mary Ann Miller Award

- **Bill Buchanan**
  - Early Learning Adviser, Kentucky Department of Education Office of Special Education and Early Learning

Congratulations, Bill!



# Presentation of the 2021 and 2022 Milken Educator Awards

Congratulations to our winners:

- **Charlotte Buskill**, Owensboro Independent
- **Jessica Goodman**, Jefferson County Public Schools
- **Kevin Dailey**, Boone County Public Schools





# Looking Ahead

KBE Regular Meeting

Feb. 7-8, 2023

Kentucky Department of  
Education

Frankfort, KY

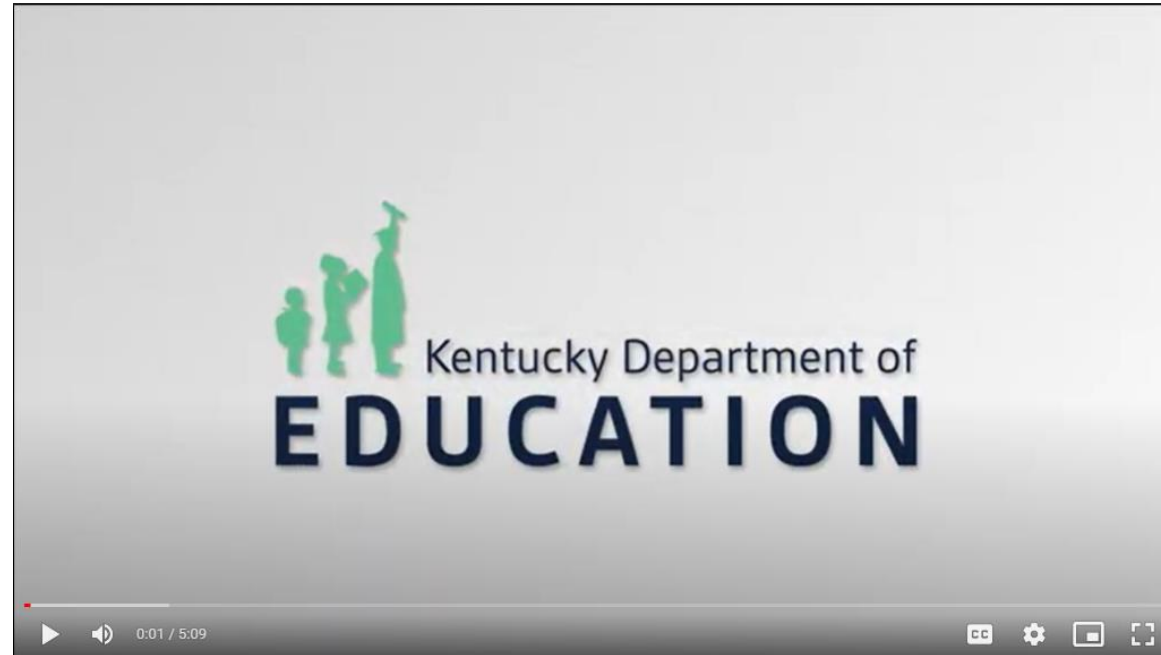


The background of the slide is a composite image. The top left portion shows a line of yellow school buses, with the number '32' visible on the front of the lead bus. The bottom left portion shows a classroom with blue walls, decorated with colorful balloons and framed pictures. Several desks and chairs are arranged in the room.

# Kentucky United We Learn Council Update

Jason E. Glass, Ed.D.,  
Commissioner of Education and Chief Learner

# Hear When Superintendents Knew Their ESSER Spending was Having an Impact on Student Learning



<https://drive.google.com/file/d/1sMqoz1jgW65MvTzSR7qEIYpDJJmsNtTF/view>

The background is a composite image. The top left shows a line of yellow school buses with 'SCHOOL BUS' written on the front. The bottom left shows a classroom with blue walls, desks, chairs, and various educational materials. A white diagonal line separates the two images.

# CTE Funding Mid-Year Adjustment Information

Scott U'Sellis, KDE Data Manager

KDE Office of Career and Technical Education

# CTE Funding (Tentative Allocation)

- Many district career and technical education (CTE) programs were funded for the first time during the 2022-2023 school year
  - HB 1 (2022) – \$70 million for the Local Area Vocational Education Center (LAVEC) pool (\$58 million more than normal) that must go toward funding not just all local centers, but all local programs
  - Locally-operated CTE programs at career and technical centers (CTCs) and comprehensive high schools
- The district and school *tentative* allocations for the 2022-2023 school year were sent to districts by June 30, 2022
  - Based upon the number of full-time equivalent (FTE) students in qualifying CTE programs during the 2021-22 school year

# CTE Funding (Final Allocation)

- According to 705 KAR 2:140, a mid-year adjustment to CTE funding is required
- The district and school *final* allocations for the 2022-2023 school year will be determined by Jan. 1, 2023
  - Based upon the number of FTE students in qualifying CTE programs during both the 2021-2022 and 2022-2023 school years

# What Happens Next?

- If your district final allocation is greater than your district tentative allocation, then a contract modification will be sent to your district for signature and budget
- If your district final allocation is less than your district tentative allocation, then a final award notification will be sent

The background is a collage of two images. The top-left portion shows a line of yellow school buses, with the word 'SCHOOL BUS' visible on the front of one. The bottom-right portion shows a classroom with blue walls, decorated with colorful balloons and framed pictures. Several desks and chairs are arranged in the room.

# Updates from the Kentucky Department for Public Health

Connie White, M.D., Deputy Commissioner for Clinical Affairs,  
Kentucky Department for Public Health





# Superintendents Webcast December 2022

Connie Gayle White, MD, MS, FACOG

Deputy Commissioner for Clinical Affairs

[connie.white@ky.gov](mailto:connie.white@ky.gov)

Dec. 13, 2022



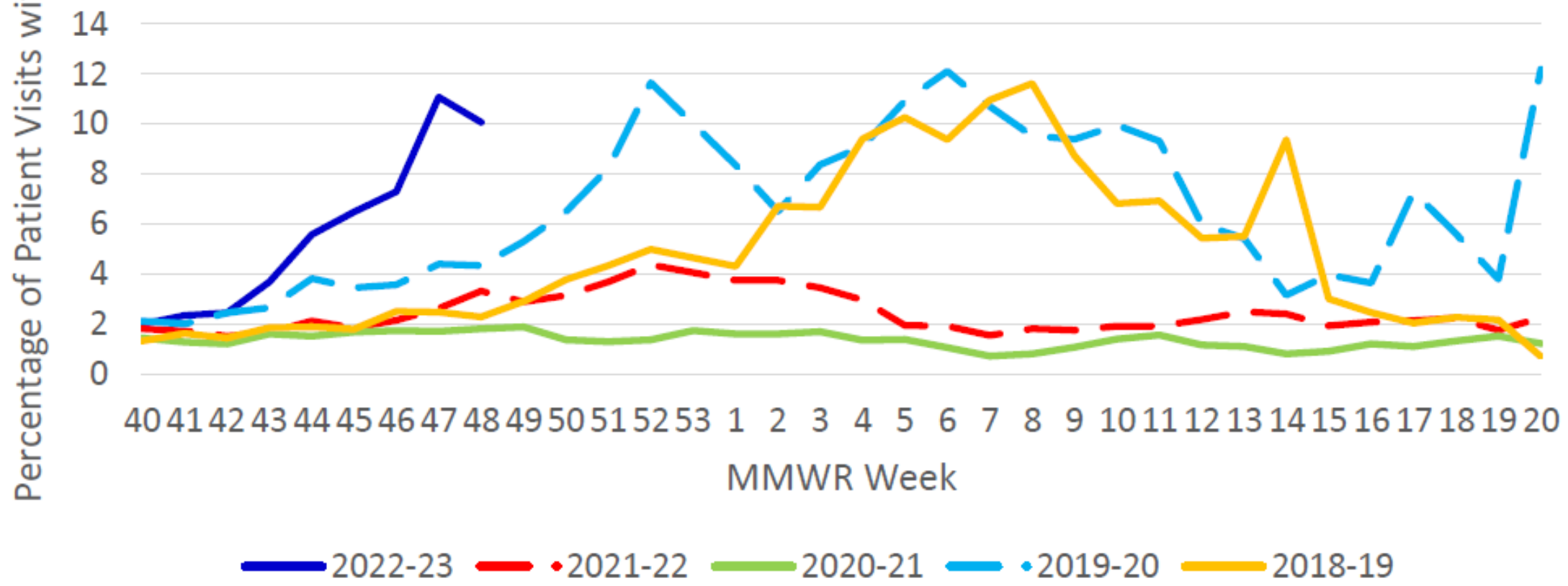
**Kentucky Public Health**  
Prevent. Promote. Protect.



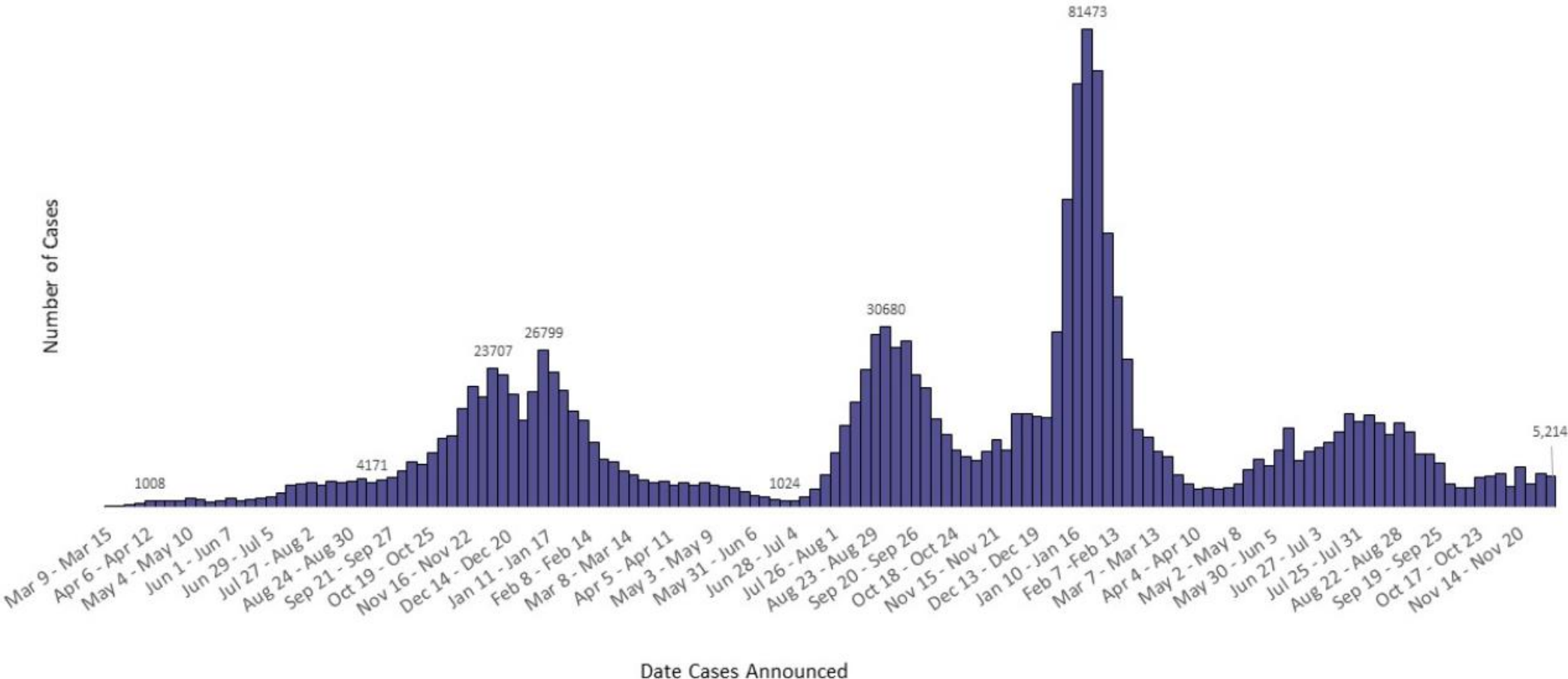
**TEAM**   
**KENTUCKY**®

CABINET FOR HEALTH  
AND FAMILY SERVICES  
Kentucky Department of  
**EDUCATION**

## Percentage of Patient Visits with ILI in Kentucky by MMWR Week Reported by ILINet Providers Statewide



# Kentucky COVID-19 New Cases by Week (n = 1,646,271)



Last Updated December 11, 2022

Cases reported more than 30 days after occurrence are included in cumulative totals only.



## Community Level COVID-19 Guidance

	LOW	MEDIUM	HIGH
Vaccination	Stay up to date with vaccinations	Stay up to date with vaccinations	Stay up to date with vaccinations
Mask use	Mask based on individual preference, informed by individual risk  Targeted mask use in schools and other indoor settings following exposures	Consider universal mask use in indoor congregate settings  Targeted mask use in schools and other indoor settings following exposures	Wear well-fitting masks in all indoor public settings including K-12 schools
Isolation & Quarantine	Stay home when sick  Follow isolation & quarantine guidance, including getting tested if exposed or have symptoms of COVID-19	Stay home when sick  Follow isolation & quarantine guidance, including getting tested if exposed or have symptoms of COVID-19	Stay home when sick  Follow isolation & quarantine guidance, including getting tested if exposed or have symptoms of COVID-19
Physical distancing			Limit indoor in-person gatherings and reduce size of gatherings. Encourage physical distancing.
High risk persons	Talk to healthcare provider about preventative treatments	Consider wearing well-fitted mask in all indoor public settings  Talk to healthcare provider about preventative treatments	Consider avoiding non-essential indoor public activities  Talk to healthcare provider about preventative treatments

[www.kycovid19.ky.gov](http://www.kycovid19.ky.gov)

# Have you been exposed to or tested positive for COVID-19?

If you have tested  
**POSITIVE FOR COVID-19**  
and have **SYMPTOMS**:

Isolate for

**10**

**DAYS** from the  
date symptoms began.

- If symptoms fully resolve, isolation may be shortened and end after day 5 on the first day without symptoms.
- Wear a well-fitting face mask for 10 full days since the start of symptoms. Isolation should not be shortened if a mask cannot be worn properly and consistently.

If you have tested  
**POSITIVE FOR COVID-19**  
and have  
**NEVER HAD SYMPTOMS**:

Isolate for

**5**

**DAYS** from the  
date you had your test done.

- Wear a well-fitting face mask for 5 additional days.
- Isolation should be extended to 10 days if a mask cannot be worn properly and consistently.

If you have been in  
**CLOSE CONTACT**  
with someone diagnosed with  
COVID-19 :

Monitor Symptoms for

**10**

**DAYS** from  
your last exposure.

- You do not need to quarantine if you do not have symptoms.
- Wear a well-fitting face mask for 10 days from your last exposure when in public places.
- Stay home and get a test if symptoms develop.
- Get a test 5 or more days after exposure.

The best protection against COVID-19 is to stay up to date with recommended COVID-19 vaccines, including any booster dose(s) when eligible.

To find a COVID-19 vaccine or booster near you: Search [vaccines.gov](https://www.vaccines.gov), text your ZIP code to 438829 or call 1-800-232-0233.

TEAM  
KENTUCKY

July 27, 2022  
KYCOVID19.KY.GOV



# Flu & COVID -19 Vaccination Toolkit

The Flu and COVID-19 are both contagious respiratory illnesses that can result in serious health issues for those not protected by vaccination.

Staying up to date on routine vaccinations such as Flu and COVID-19 is the best way to protect the body from serious diseases. These vaccinations may even be given on the same day.

Learn more by reviewing the resources below.



[Click Here to View Sharable  
Flu Awareness Videos](#)



## Flu

### [CDC Guidance](#)

[Similarities and Differences Between Flu and COVID-19](#)

[Vaccination Guidance for Children](#)

[Vaccination Guidance During Pregnancy](#)

[ACOG 3 Reasons Why You Need a Flu Vaccine During Pregnancy](#)

[Frequently Asked Questions](#)

## COVID-19

### [CDC Guidance](#)

[KDPH Guidance](#)

[Vaccination Guidance for Children](#)

[Vaccination Guidance During Pregnancy](#)

[ACOG 3 Reasons Why You Need a COVID-19 Vaccine During Pregnancy](#)

[Vaccination Frequently Asked Questions](#)

[ACOG: COVID-19 Vaccination Considerations for Obstetric-Gynecologic Care](#)

## Educational Resources

[Flu & COVID-19 Vaccine Infographics](#)

[COVID Vaccine Schedules](#)

[CDC Flu Resource Center](#)

[Sharable Social Media Graphics](#)



<https://www.chfs.ky.gov/agencies/dph/dehp/imm/FluCvd19VaccineToolkit.pdf>

# Fall COVID-19 Booster

Did you get your fall COVID-19 booster?

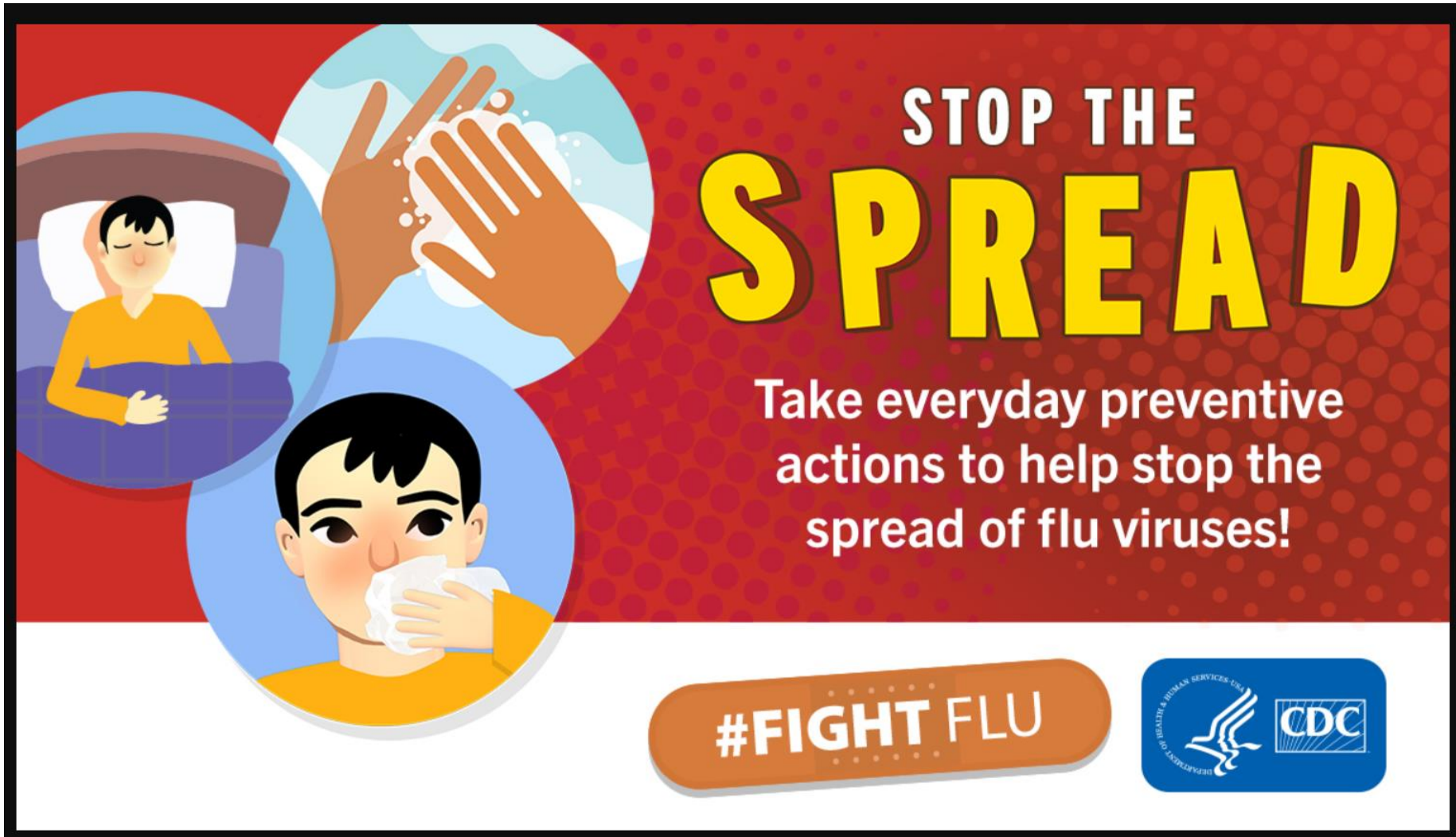
If it has been at least **2 months** since receiving a COVID-19 vaccine (age 5+) **then you are eligible for a booster.**

To find a vaccine near you, visit [www.vaccines.gov](http://www.vaccines.gov)



<https://www.chfs.ky.gov/agencies/dph/dehp/Pages/iom.aspx>





<https://www.cdc.gov/flu/resource-center/social-media-graphics.htm>

# How do we protect our students/staff?

- Wash hands
- Cover coughs
- Stay home when you are sick
- Encourage vaccination for both flu and bi-valent COVID-19
- Notify the local health department if you are closing school so they can provide you information about possible vaccination clinics available

The background of the slide is a composite image. The top left portion shows a line of yellow school buses, with the word 'SCHOOL BUS' visible on the front of the lead bus. The bottom left portion shows a classroom with blue walls, decorated with colorful balloons and framed pictures. Several desks and chairs are arranged in the room.

# Use of ARP ESSER Funds Activity

Jason E. Glass, Ed.D., Commissioner of Education and Chief Learner

The background is a composite image. The top left shows a line of yellow school buses with "SCHOOL BUS" written on the front. The bottom left shows a classroom with blue walls, desks, chairs, and colorful balloons. A large white diagonal shape cuts across the image from the top left to the bottom right, serving as a background for the text.

# Question and Answer Session

*(Submit Questions via Google Form)*

**KDE Leadership**

 Kentucky Department of  
**EDUCATION**

The background is a composite image. The top left shows a line of yellow school buses with "SCHOOL BUS" written on the front. The bottom left shows a classroom with blue walls, desks, chairs, and colorful balloons. A white diagonal line separates the two images.

# Next Superintendents Webcast

Jan. 10, 2023

